

How to Register:

Register at our website using the on-line registration system: www.ettc.net/cal

You can also download a registration form and fax the completed form back to our office.

Registrations should be mailed to:

Southern Regional Institute and ETTC
Stockton College, 701 Route 50
Mays Landing, NJ 08330

Fax to: (609) 625-6057. Registrations are handled on a first-come, first-served basis.

After registering, you will receive a confirmation letter from us. The letter will indicate date, time, location, directions, and payment summary.



Call us at (609) 625-6040
or visit our online
calendar at www.ettc.net

**Information on workshops and
upcoming events is available and
updated regularly at www.ettc.net.**

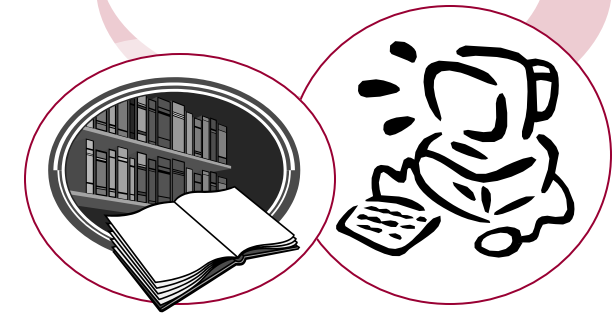
**NEW JERSEY'S
DISTINCTIVE
Public College**

Southern Regional Institute and ETTC
Richard Stockton College of New Jersey
701 Route 50
Mays Landing, NJ 08330

Southern Regional Institute and ETTC

**Professional Development in
Technology, the Core Curriculum
Content Standards, and more**

*Make professional
development work for you!*



Southern Regional Institute and ETTC
Richard Stockton College of New Jersey
701 Route 50
Mays Landing, NJ 08330

Phone: (609) 625-6040
Fax: (609) 625-6057
Email: ettc@stockton.edu
Website: www.ettc.net

Southern Regional Institute and ETTC

Acknowledging the enormous success of the Atlantic County Educational Technology Training Center (ETTC), the New Jersey Department of Education designated the ETTC as the Southern Regional ETTC in July 2002. Shortly thereafter, NJ DOE charged the Richard Stockton College of New Jersey to develop an institute, *The Southern Regional Institute (SRI)*, devoted to the study and delivery of professional development for the Pre K-12 sector.

The SRI & ETTC consortium represents 86 public school districts, charter schools, non-public schools, and non-profit organizations. The primary mission of the SRI is to provide professional development opportunities for PreK-12 educators and other professionals who offer support services to schools. The overall goals of the SRI are to improve student academic achievement, organization effectiveness, employee performance, and user satisfaction.

The Southern Regional ETTC is a vital component of the SRI. The ETTC's mission is to enhance the education available to students in South Jersey through the creative use of educational technologies in the classroom. ETTC provides professional development through a public calendar of workshops as well as custom on-site events. The ETTC houses a state-of-the-art demonstration facility and clearing house where teachers can explore new technologies.

Educators and Technology

SRI & ETTC provides PreK-12 teachers, administrators and all school personnel with training opportunities on relevant subjects including the New Jersey Core Curriculum Content Standards, instructional technology, computer technologies, state mandated programs and distance learning.

Community and Technology

Many workshops are tailored to the needs of our non-profit members such as office technology skills, web page design, and data management. The general public is always welcome to register for our training activities.

Member school districts receive an annual allocation of ETTC Hours that can be used to register for almost all workshops and to schedule in-service training.

If interested in joining our consortium and/or purchasing training, please mail or email a written request to the SRI & ETTC. More information is available at www.ettc.net/aboutus/member.cfm.

Benefits of Membership:

Workshop Calendar:

The ETTC is an approved professional development provider (ID#229) by the New Jersey Department of Education. We offer a diverse monthly workshop calendar with a little something for everyone!

On-site Professional Development:

Members can request on-site workshops by SRI & ETTC staff. These workshops can be part of a teacher in-service and/or staff development program, or as an after-work offering. Members can use ETTC Hours to register individuals for these on-site sessions, or contract with the SRI & ETTC at the standard workshop rate. In addition, SRI & ETTC can customize in-service sessions to meet the needs of your curriculum, technology plan, and staff training goals. For an overview of membership benefits and fees, please visit www.ettc.net/aboutus/member.cfm.

Mentoring:

Teachers and office professionals can request one-on-one assistance through the mentoring/coaching program. ETTC has several mentors available including retired educators and experienced classroom teachers. Topics, content, pace and scheduling are at the mutual convenience of the participant, the mentor, their organization/school and the ETTC.

Grant Writing and Evaluation Services Program:

SRI & ETTC staff have extensive experience working with school districts in the preparation of grant applications and evaluation services. In addition to being awarded grants from federal, state, and private funds, the SRI & ETTC has partnered with several school districts on their grant programs. ETTC Hours can be used to purchase these services.

Distance Learning:

SRI & ETTC offers a variety of professional development and classroom workshops via web-conferencing, and various digital services. Details are online at www.ettc.net/ava.



Demonstration Center and Technology Lending Program:

Hands-on exploration at SRI & ETTC is available on:

- PCs and Macs with high speed Internet Access
- Technology Gadgets - Digital Cameras, PDAs, Microscopes
- Over 250 educational software titles
- Books, self-study guides and manuals

Information on projects, workshops, and upcoming events is available at www.ettc.net